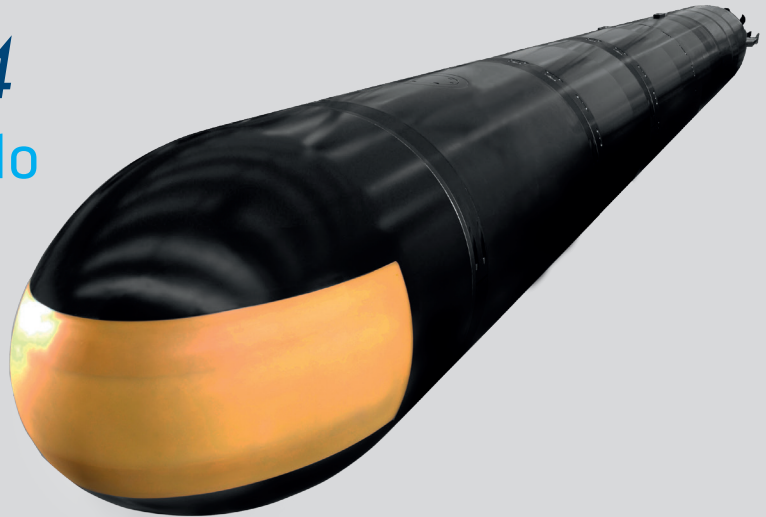


SeaHake™ mod4

Naval Weapons



SeaHake™ mod4 Heavy Weight Torpedo



Operation

Multipurpose Heavyweight Torpedo

Launched from submarines, ships or shore based platforms against underwater and surface targets in confined littoral, dense multiple target/jammer/decoy scenarios and blue water operations.

Guidance

From full autonomous mode to full manual operator mode.

Homing

Active, passive, combined (active/passive) acoustic homing, intercept homing and wake homing.

Fuse

Impact and inductive proximity fuse, independent from sea state.

Speed

Very high speed, including continuous speed control, to encounter present and future scenarios.

Range

Extreme unmatched endurance and guided range far beyond firing platform sensor range.

Calibre

Standard calibre of 21 inch (533 mm).

Length/ Weight with casket

Standard version: ~ 6,22 m / ~ 1530 kg

Support

Full life time support for new built platforms and refit programs including integration, operation, training, spares, maintenance and exercise firings.

Integration

Integration to any modern platform and Combat Management System (CMS). Available as sensor-to-shooter concept with the complete functional chain from sonar to CMS and HWT all from ATLAS ELEKTRONIK.

References

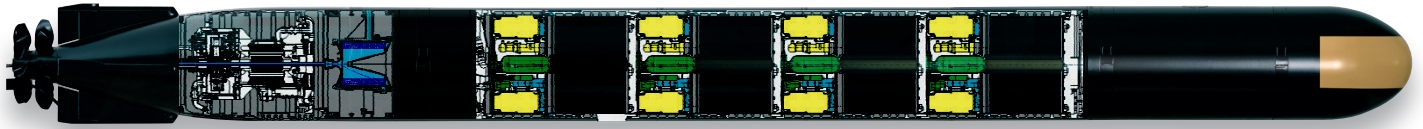
Type 209, 212A/214, S-80 Agosta 90B submarines.

... a sound decision

 **ATLAS ELEKTRONIK**

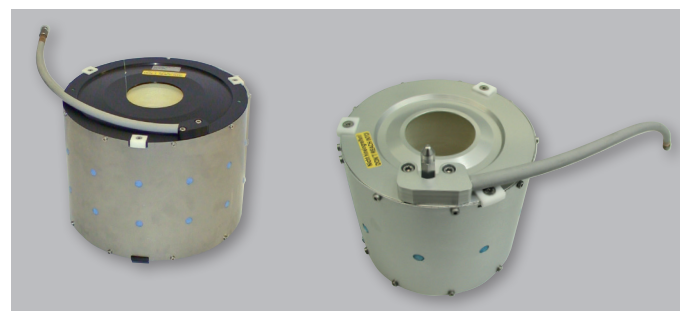
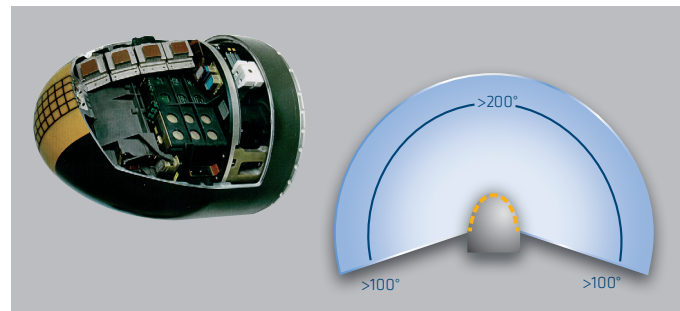
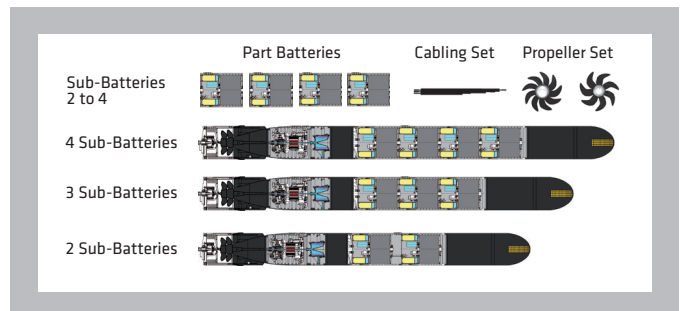
SeaHake™ mod4

Multipurpose Heavyweight Torpedo



Advantages

- In-service with leading navies, more than 10.000 wet firings.
 - Modular battery concept with inherently safe chemistry and very short activation time ("snap shot capable").
 - Capsulated battery, independent from environmental conditions and free from seawater activation.
 - Flexible configuration of either two, three or four combat batteries.
 - Available with Silver Zinc or Lithium-Ion Exercise Battery.
-
- Conformal Array with extreme wide angle of view → Avoidance of snaking manoeuvres.
 - Digital broadband signal processing.
 - Superior target/jammer/decoy classification and discrimination in active and passive mode .
 - Long range detection of intercept pulses.
 - High ACCM capabilities → Leads to high TCCM capabilities in the entire torpedo system.
 - Hydro-acoustically optimized homing head shape → no cavitations and flow noise.
-
- ATLAS ELEKTRONIK is the only supplier of fibre optical guidance for Heavweight Torpedoes worldwide.
 - Fibre optical communication of torpedo, sensor and target data including true audio channel.
 - Warhead and fuse safety according to STANAG 4439.
 - Casket adaptable to any launching type including swim-out, ram, HP air, water steam.



ATLAS ELEKTRONIK GmbH
Sebaldsbruecker Heerstr. 235
28309 Bremen
Germany

Phone: +49 421 457-02
Telefax: +49 421 457-3699
marketing@atlas-elektronik.com
www.atlas-elektronik.com

